



DISCONTINUED

MAXNET®

Pat. #s U.S. 6,842,348; 7,043,236;
Cdn. 2,404,840; 2,404,844

D3.1/CCAP™
Compliant

MN5E Front Mount Chassis with Cable Management Ears

INSTALLATION MANUAL

Although every effort has been taken to ensure the accuracy of this document it may be necessary, without notice, to make amendments or correct omissions. Specifications subject to change without notice.

SignalOn® Series, MAXNET®, HFC Enhance®, PCI Filters®, Q-Series® & FiberLinx® are registered trademarks of ATX in the United States and/or other countries. SMACSM is a service mark of ATX in the United States and/or other countries. Products or features contained herein may be covered by one or more U.S. or foreign patents. Other non-ATX product and company names in this manual are the property of their respective companies.

ATX Confidential & Proprietary

TABLE OF CONTENTS

	Page
1. <u>INSTALLATION INSTRUCTIONS</u>	1-1
1.1. <u>Contents</u>	1-1
1.2. <u>Step 1</u>	1-1
1.3. <u>Step 2</u>	1-1
2. <u>SERVICE & SUPPORT</u>	2-1
2.1. <u>Contact ATX Networks</u>	2-1
2.2. <u>Warranty Information</u>	2-1

This page left intentionally blank.

INSTALLATION INSTRUCTIONS

1. Installation Instructions

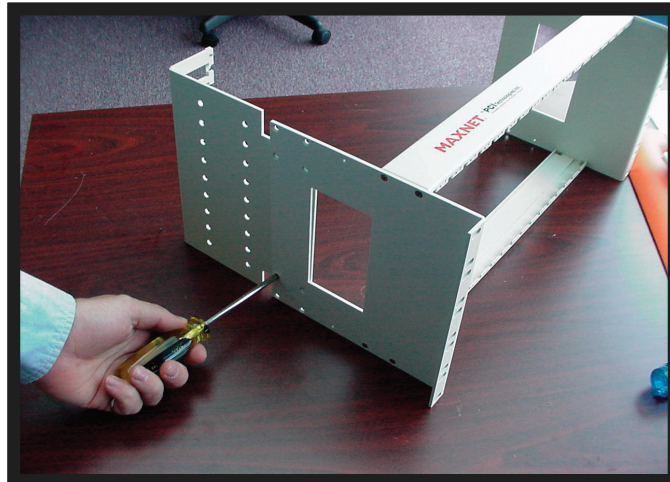
1.1 Contents

- 1 - MAXNET 5RU Chassis
- 2 - Cable Management Ears
- 10 - 6 - 32 x 1/4 Phillips Screws
- 40 - Cable Tie Buttons

1.2 Step 1

When shipped the chassis and Cable Management Ears are separate.

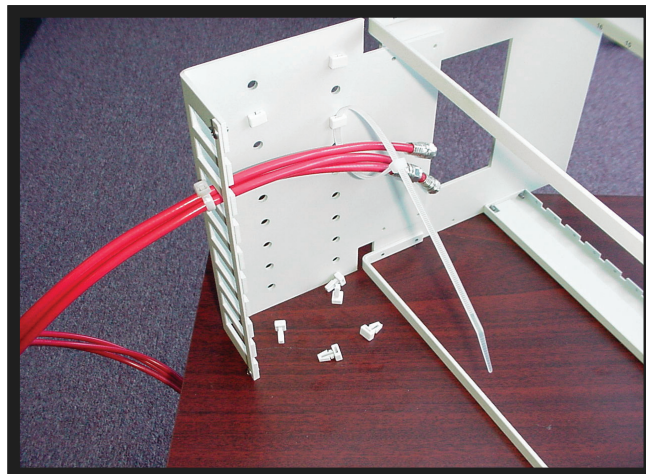
Attach Cable Management Ears to the chassis using 6 - 32 x 1/4 screws (four per side).



1.3 Step 2

Insert cable tie buttons into holes on Cable Management Ears in desired locations.

Loop cable ties through buttons to secure cables.



This page left intentionally blank.

SERVICE & SUPPORT

2. Service & Support

2.1 Contact ATX Networks

Please contact ATX Technical Support for assistance with any ATX products. Please contact ATX to obtain a valid RMA number for any ATX products that require service and are in or out-of-warranty before returning a failed module to ATX.

TECHNICAL SUPPORT

Tel: 289.204.7800 – press 1
Toll-Free: 866.YOUR.ATX (866.968.7289) USA & Canada only
Email: support@atx.com

SALES ASSISTANCE

Tel: 289.204.7800 – press 2
Toll-Free: 866.YOUR.ATX (866.968.7289) USA & Canada only
Email: insidesales@atx.com

FOR HELP WITH AN EXISTING ORDER

Tel: 289.204.7800 – press 3
Toll-Free: 866.YOUR.ATX (866.968.7289) USA & Canada only
Email: orders@atx.com
Web: www.atx.com

2.2 Warranty Information

All of ATX Networks' products have a 1-year warranty that covers manufacturer's defects or failures.



© 2019 by ATX Networks Corp. and its affiliates (collectively "ATX Networks Corp.").
All rights reserved. This material may not be published, broadcast, rewritten, or
redistributed. Information in this document is subject to change without notice.

Rev. 12/19 (ANW0717)



ATX Networks

Tel: 289.204.7800 | Toll-Free: 866.YOUR.ATX (866.968.7289) | support@atx.com

www.atx.com